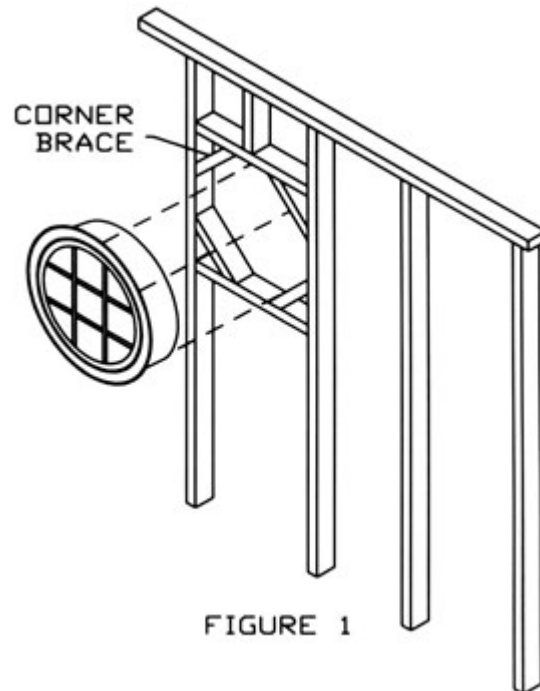
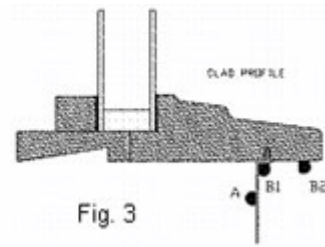
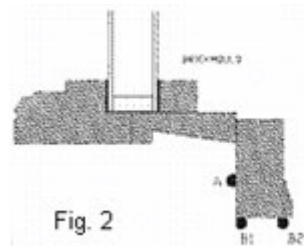


When installing the window unit, it is important that the installer read and understands all instructions before proceeding.



1. Frame opening to rough opening dimensions of unit, add corner braces so that the unit can be secure on all sides. See fig. 1 and building code note before framing.
2. Working from the outside, place unit into center of rough opening. Check jamb for proper finishing depth. Add jamb extensions to frame if necessary.
3. Before nailing unit in wall, apply a bead of caulk behind brickmoulding or nailing fin. See fig. 2 and 3, detail A.
4. Nail into upper brickmoulding or nailing fin to temporarily hold unit into rough opening. Center unit in opening and shim if necessary before proceeding.
5. Secure unit with six nails minimum in brickmoulding or in each hole of nailing fin. See fig.1



Is very important to apply a quality caulk to unit.

6. Insulate around inside the perimeter of unit frame gap, before installing interior trim. Note, when installing inside trim, make certain trim does not prevent inside stops from being removed for service.
7. Before installing or replacing exterior siding, apply a bead of caulk around brickmoulding or poly frame. See fig. 2 and 3, detail B1. Cut siding to butt against brickmoulding or poly frame of unit.
8. Apply a bead of caulk around perimeter of brickmoulding or poly frame where it meets the siding. See fig. 2 and 3, detail B2.
9. Finish the window with best quality paint or stain as soon as possible after installation is complete.

Note: Building Codes

As there are numerous dominant Building Codes in existence and practice throughout North America, in addition to the many State-level and Local codes, Shelter Products, LLC urges specifiers and users to refer to their local codes as to exterior window installations. As with any wood or polyurethane window unit, Shelter Products, LLC products are not designed or sold to provide structural support unless otherwise stated.